

Fairburn Drill Plan

Fairburn
Mining &
Exploration



submitted by: Allen Bonck & Walt Amick

File: DrillPlan

2011 Fairburn Mining & Exploration Drill Plan

Drill Locations & Details for
the Fairburn Project

Supplement to FS-2800-5
Plan of Operation

Fairburn Drill Plan

Fairburn
Mining &
Exploration



submitted by: Allen Bonck & Walt Amick

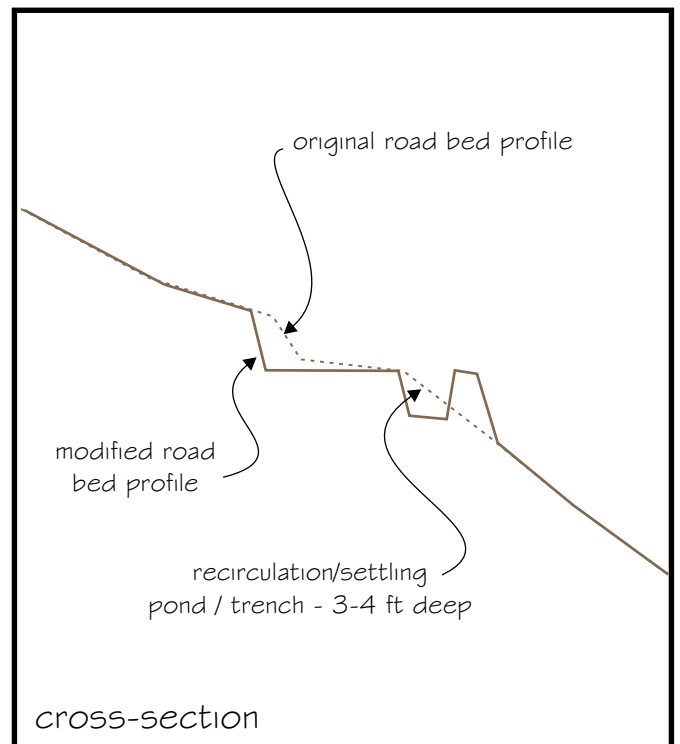
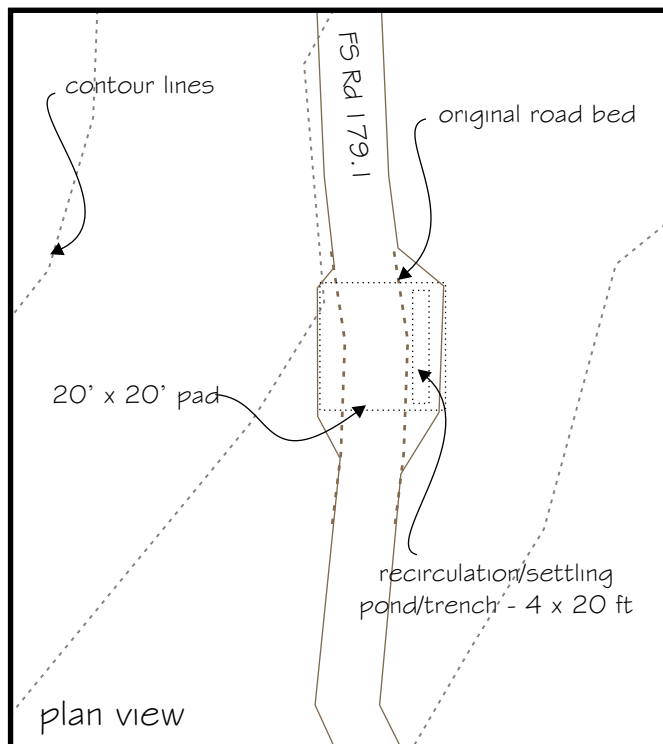
File: DrillPlan

INTRODUCTION:

This draft is to illustrate approximate locations, drill site layouts, and specify industry observed environmental protocols for general diamond-core drilling. As it is Fairburn's intent to follow best management practices accepted by the industry, the drill-site and settling pond design may be subject to modifications.

The 2010 portion of this plan is the approval and completion of all access roads addressed in prior Plan of Operations filed with the Forest Service.

Typical drill site and recirculating/settling pond drawings and specifications



DRILL SITES:

Drill sites are situated in existing road beds, and are designed to position a wire-line diamond core drill, (requiring a 12 by 6 foot-print), to drill a 2-3" bore in the direction specified in the following pages. Water is required to cool the bit, and a bio-degradable polymer is used as a supplement to the drilling fluid (water). Local experience says ~80% of this fluid does not return to the top drilling collar, but as it does it enters a recirculation pond, where rock cuttings settle out. These ponds are not lined so as to allow water to filter out through the pond side-walls and bottom. Ponds are backfilled and closed after drilling operation.

HOLE CLOSURE:

Typically a bore will require a casing (steel), which is fitted with a cap for temporary closure, (12-24 months). In the event boring activity should resume to that site, the cap is removed.

HOLE ABANDONMENT:

In the event a bore hole is abandoned, a layer of 20 to 30 ft of thick-mixed portland is situated from the surface of the bedrock down.

Fairburn Drill Plan

Fairburn
Mining &
Exploration

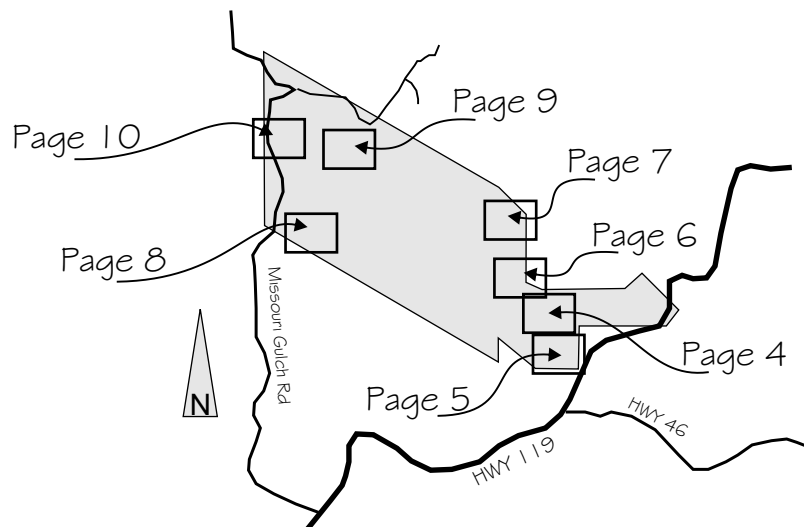


submitted by: Allen Bonck & Walt Amick

File: DrillPlan

Locations and specifications for core drill: UTM: NAD 27; 13N
Azimuth; not adjusted for local declination

HOLE	LOCATION		AZIMUTH	DIP	PAGE
	Easting	Northing			
DD2011-01	457652 E;	4411101 N	216	-45	4
DD2011-02	457645 E;	4411129 N	037	-45	4
DD2011-03	457799 E;	4411096 N	212	-45	4
DD2011-04	457748 E;	4411093 N	037	-45	4
DD2011-05	457866 E;	4410836 N	030	-45	5
DD2011-06	457753 E;	4410602 N	049	-45	5
DD2011-07	458025 E;	4410698 N	023	-45	5
DD2011-08	457674 E;	4410707 N	049	-45	5
DD2011-09	458024 E;	4411074 N	205	-45	4
DD2011-10	457567 E;	4411365 N	216	-45	6
DD2011-11	457586 E;	4411419 N	052	-45	6
DD2011-12	457632 E;	4411627 N	224	-45	6
DD2011-13	457495 E;	4411796 N	222	-45	7
DD2011-14	457486 E;	4411798 N	312	-45	7
DD2011-15	456046 E;	4411529 N	032	-45	8
DD2011-16	455911 E;	4411565 N	344	-45	8
DD2011-17	456001 E;	4411698 N	121	-45	8
DD2011-18	455933 E;	4411752 N	214	-45	8
DD2011-19	455847 E;	4411800 N	173	-45	8
DD2011-20	455732 E;	4411761 N	032	-45	8
DD2011-21	456108 E;	4412498 N	110	-45	9
DD2011-22	456106 E;	4412422 N	310	-45	9
DD2011-23	455979 E;	4412340 N	132	-45	9
DD2011-24	455453 E;	4412671 N	185	-45	10
DD2011-25	455535 E;	4412465 N	037	-45	10



Fairburn Drill Plan

Fairburn
Mining &
Exploration



submitted by: Allen Bonck & Walt Amick

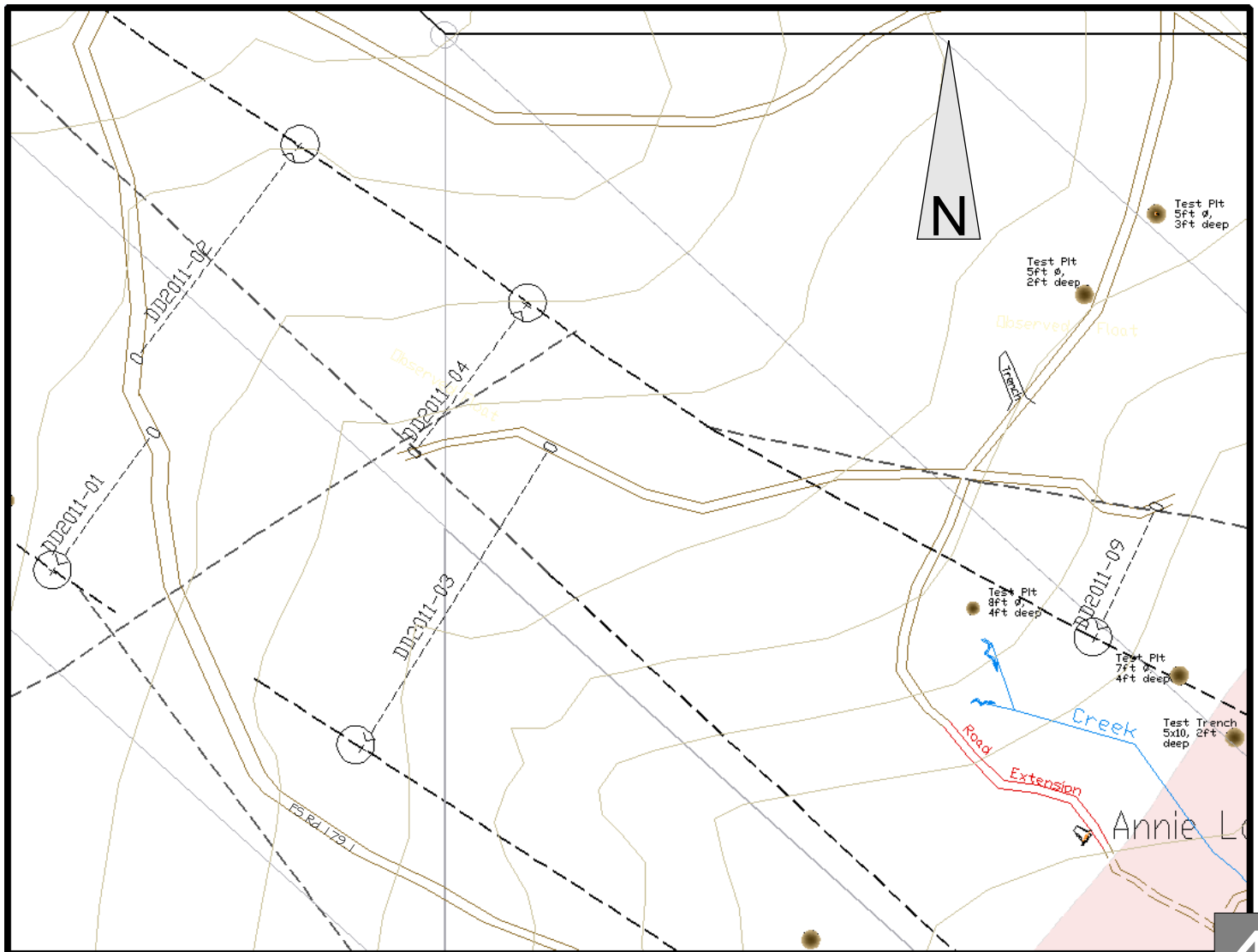
File: DrillPlan

Locations and specifications for core drill:
UTM: NAD 27; 13N
Azimuth; not adjusted for local declination

Drill Map Symbol Key



HOLE	LOCATION		AZIMUTH	DIP	ACCESS
	Easting	Northing			
DD2011-01	457652 E;	4411101 N	216	-45	established 2010
DD2011-02	457645 E;	4411129 N	037	-45	established 2010
DD2011-03	457799 E;	4411096 N	212	-45	new for 2011
DD2011-04	457748 E;	4411093 N	037	-45	new for 2011
DD2011-09	458024 E;	4411074 N	205	-45	new for 2011



Fairburn Drill Plan

Fairburn
Mining &
Exploration



submitted by: Allen Bonck & Walt Amick

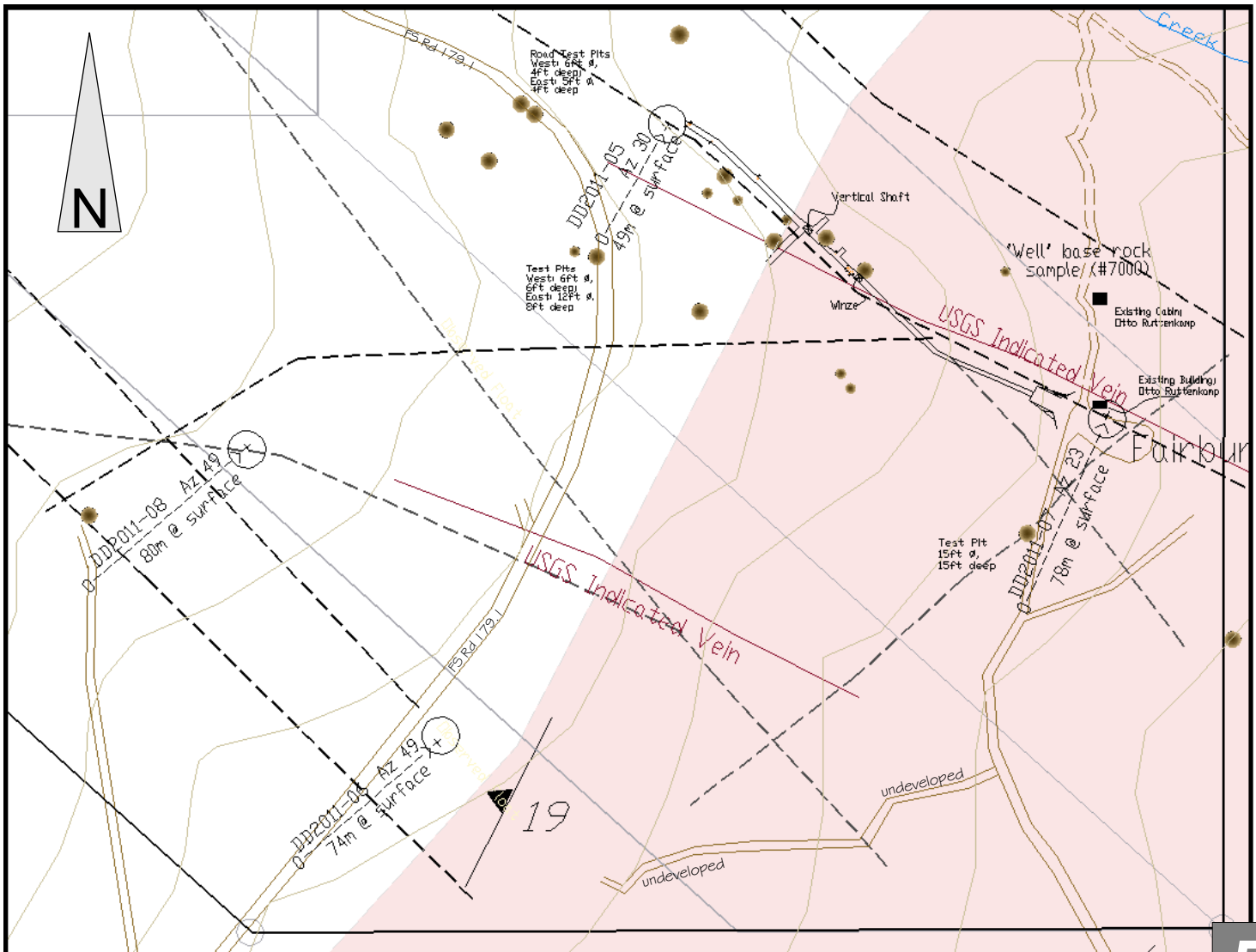
File: DrillPlan

Locations and specifications for core drill:
UTM: NAD 27; 13N
Azimuth; not adjusted for local declination

Drill Map Symbol Key



HOLE	LOCATION		AZIMUTH	DIP	ACCESS
	Easting	Northing			
DD2011-05	457866 E;	4410836 N	030	-45	established 2010
DD2011-06	457753 E;	4410602 N	049	-45	established 2010
DD2011-07	458025 E;	4410698 N	023	-45	established 2005
DD2011-08	457674 E;	4410707 N	049	-45	new for 2011



Fairburn Drill Plan

Fairburn
Mining &
Exploration



submitted by: Allen Bonck & Walt Amick

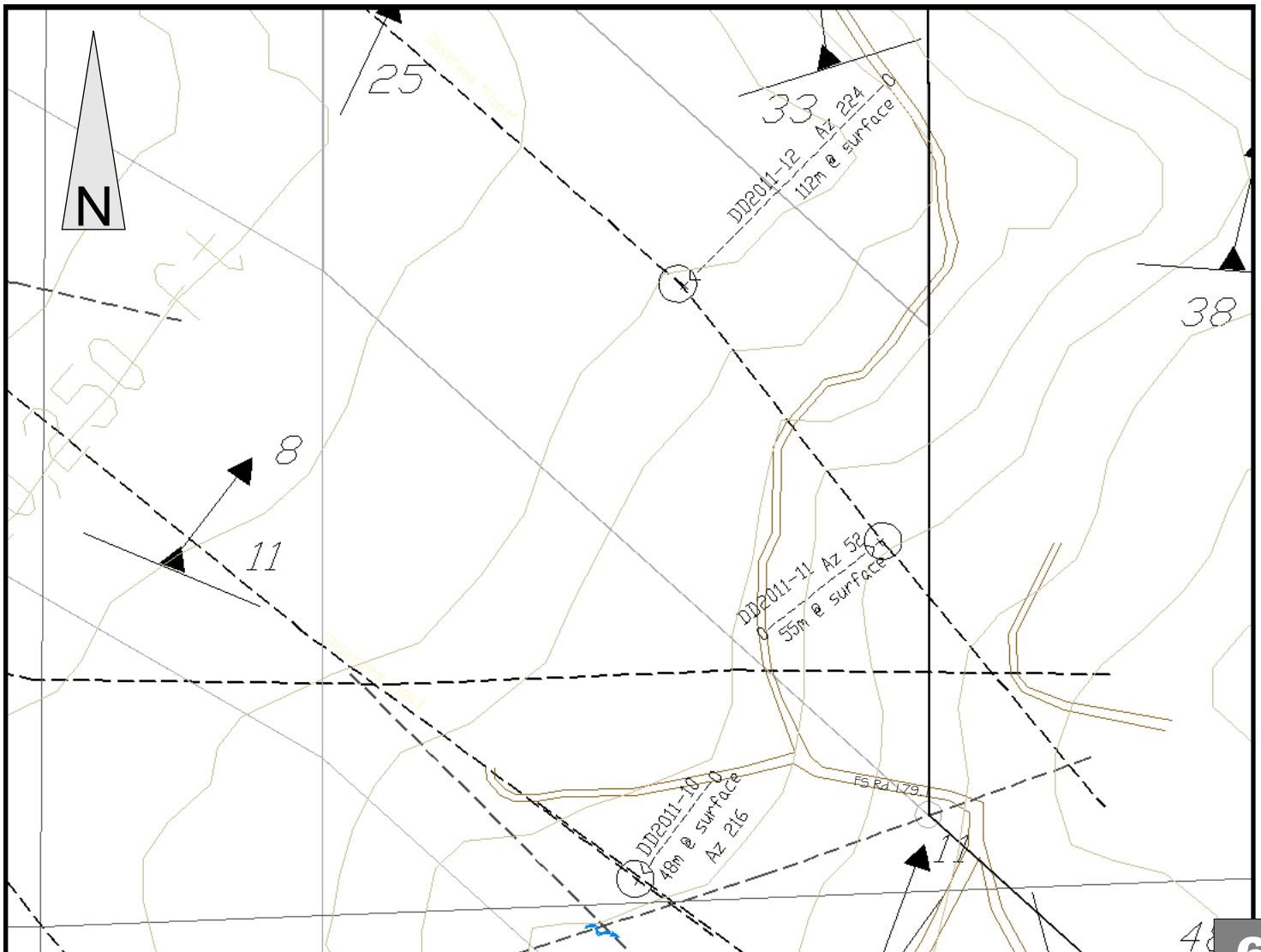
File: DrillPlan

Locations and specifications for core drill:
UTM: NAD 27; 13N
Azimuth; not adjusted for local declination

Drill Map Symbol Key



HOLE	LOCATION		AZIMUTH	DIP	ACCESS
	Easting	Northing			
DD2011-10	457567 E;	4411365 N	216	-45	new for 2011
DD2011-11	457586 E;	4411419 N	052	-45	new for 2011
DD2011-12	457632 E;	4411627 N	224	-45	new for 2011



Fairburn Drill Plan

Fairburn
Mining &
Exploration



submitted by: Allen Bonck & Walt Amick

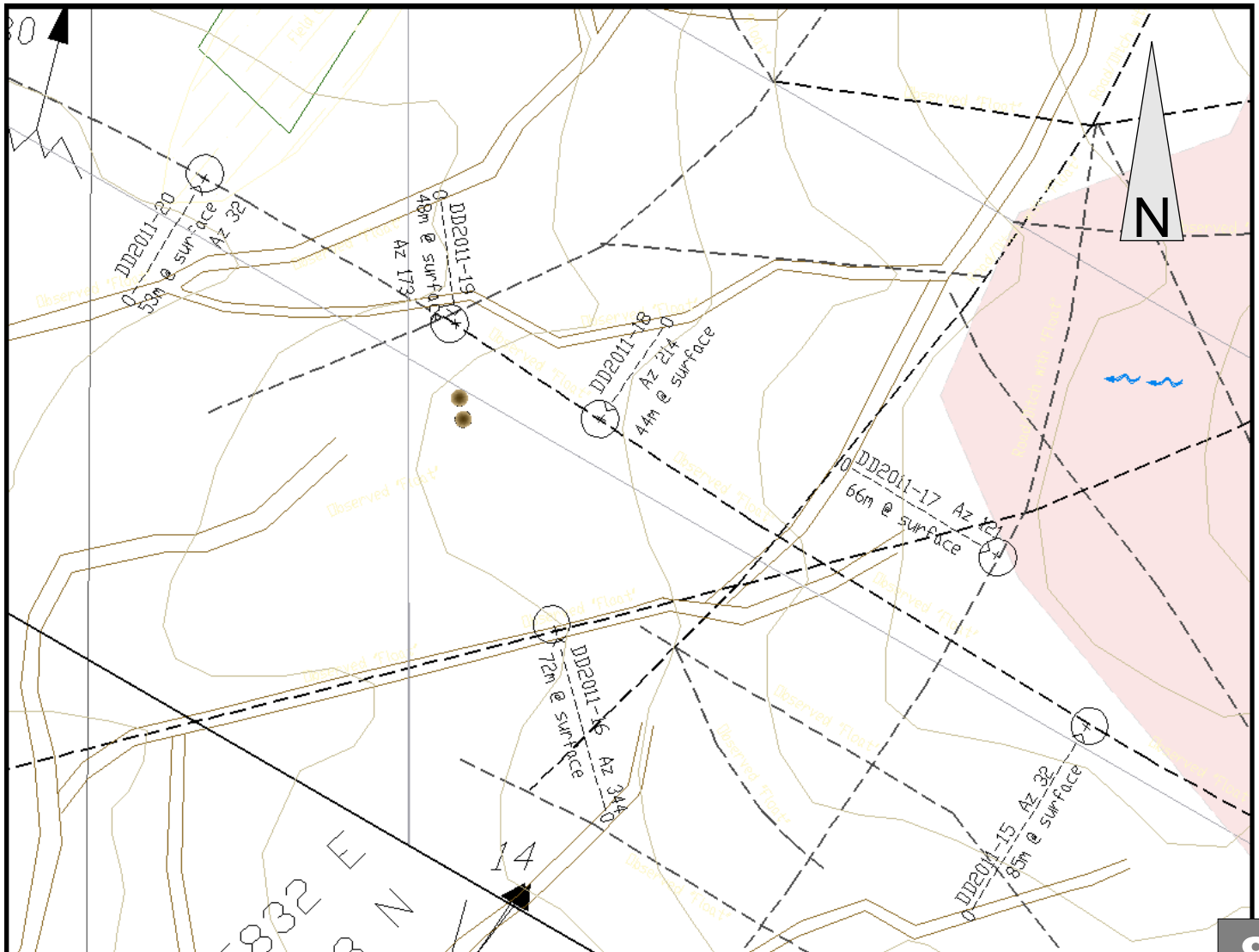
File: DriftPlanaryDrillPlan

Drill Map Symbol Key



Locations and specifications for core drill:
UTM: NAD 27; 13N
Azimuth; not adjusted for local declination

HOLE	LOCATION		AZIMUTH	DIP	ACCESS
	Easting	Northing			
DD2011-15	456046 E;	4411529 N	032	-45	new for 2011
DD2011-16	455911 E;	4411565 N	344	-45	new for 2011
DD2011-17	456001 E;	4411698 N	121	-45	new for 2011
DD2011-18	455933 E;	4411752 N	214	-45	new for 2011
DD2011-19	455847 E;	4411800 N	173	-45	new for 2011
DD2011-20	455732 E;	4411761 N	032	-45	new for 2011



Fairburn Drill Plan

Fairburn
Mining &
Exploration



submitted by: Allen Bonck & Walt Amick

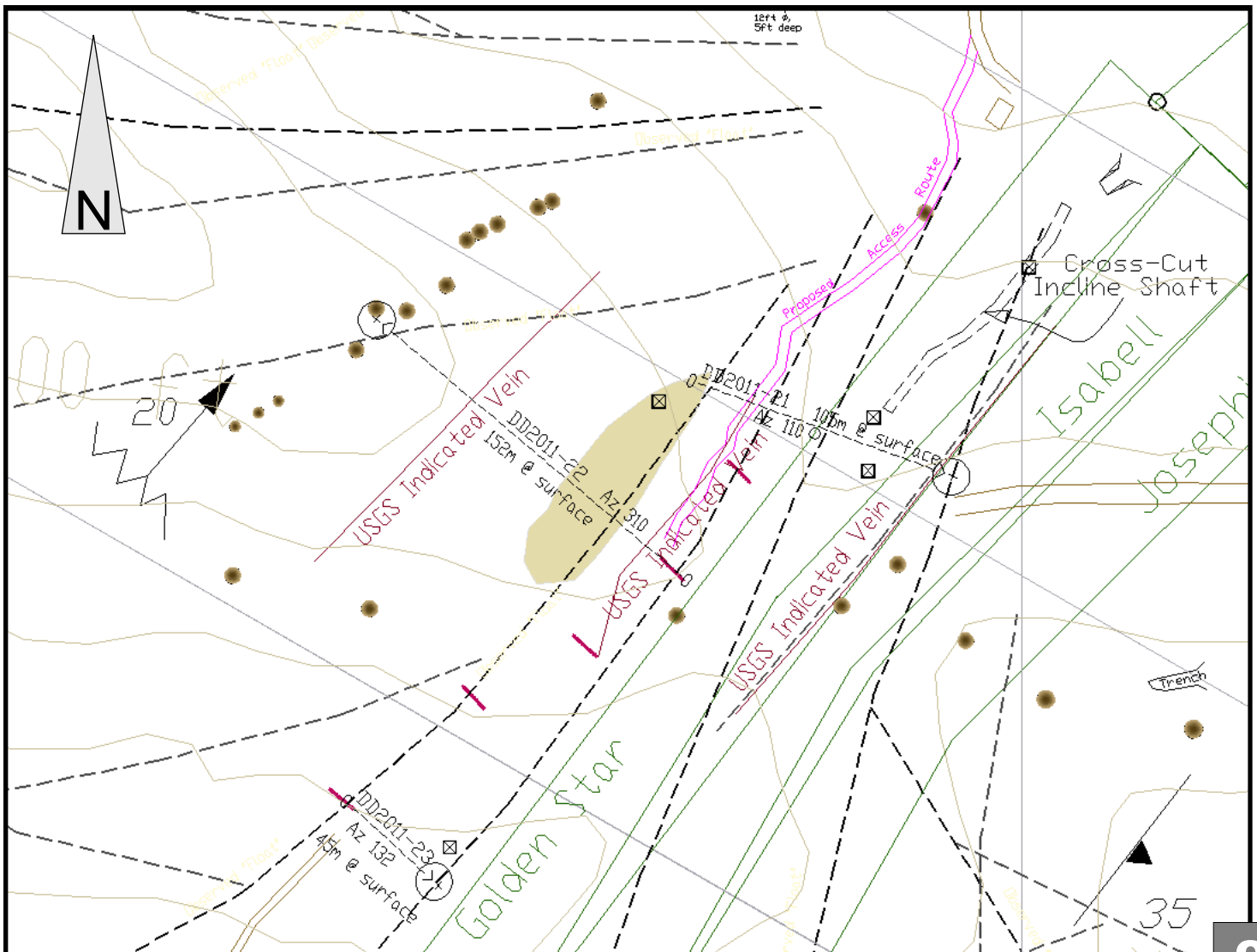
File: DrillPlan

Locations and specifications for core drill:
UTM: NAD 27; 13N
Azimuth; not adjusted for local declination

Drill Map Symbol Key



HOLE	LOCATION		AZIMUTH	DIP	ACCESS
	Easting	Northing			
DD2011-21	456108 E;	4412498 N	110	-45	established 2010
DD2011-22	456106 E;	4412422 N	310	-45	established 2010
DD2011-23	455979 E;	4412340 N	132	-45	established 2010



Fairburn Drill Plan

Fairburn
Mining &
Exploration



submitted by: Allen Bonck & Walt Amick

File: DrillPlan

Locations and specifications for core drill:
UTM: NAD 27; 13N
Azimuth; not adjusted for local declination

Drill Map Symbol Key



HOLE	LOCATION		AZIMUTH	DIP	ACCESS
	Easting	Northing			
DD2011-24	455453 E;	4412671 N	185	-45	new for 2011
DD2011-25	455535 E;	4412465 N	037	-45	established 2008

