

Fairburn Drill Plan

Fairburn
Mining &
Exploration



submitted by: Allen Bonck & Walt Amick

File: AccessPlan

2011 Fairburn Mining & Exploration Drill Plan

Access Plan for Operations on the Fairburn Project

Supplement to FS-2800-5
Plan of Operation

Fairburn Drill Plan

Fairburn
Mining &
Exploration



submitted by: Allen Bonck & Walt Amick

File: AccessPlan

Access Plan - Itemized by Drill Hole

HOLE	Access Status	Access Plan Description	Drill Map	Map
DD2011-01	established 2010	Detailed in 2009-10 trenching plan	4	n/a
DD2011-02	established 2010	Detailed in 2009-10 trenching plan	4	n/a
DD2011-03	new for 2011	New section of old mining road re-opened	4	3
DD2011-04	new for 2011	New section of old mining road re-opened	4	3
DD2011-05	established 2010	Detailed in 2009-10 trenching plan	4	n/a
DD2011-06	established 2010	Detailed in 2009-10 trenching plan	4	n/a
DD2011-07	established 2006	Detailed in 2005-6 Plan of Operation	4	4
DD2011-08	new for 2011	New section of old mining road re-opened	5	4
DD2011-09	new for 2011	New section of old mining road re-opened	4	3
DD2011-10	new for 2011	New section of old mining road re-opened	6	5
DD2011-11	new for 2011	New section of old mining road re-opened	6	5
DD2011-12	new for 2011	New section of old mining road re-opened	6	5
DD2011-13	new for 2011	New section of old mining road re-opened	7	6
DD2011-14	new for 2011	New section of old mining road re-opened	7	6
DD2011-15	new for 2011	New section of old mining road re-opened	8	7
DD2011-16	new for 2011	New section of old mining road re-opened	8	7
DD2011-17	new for 2011	New section of old mining road re-opened	8	7
DD2011-18	new for 2011	New section of old mining road re-opened	8	8
DD2011-19	new for 2011	New section of old mining road re-opened	8	8
DD2011-20	new for 2011	New section of old mining road re-opened	8	8
DD2011-21	established 2010	Detailed in 2009-10 trenching plan	9	n/a
DD2011-22	established 2010	Detailed in 2009-10 trenching plan	9	n/a
DD2011-23	established 2010	Detailed in 2009-10 trenching plan	9	n/a
DD2011-24	new for 2011	New section of old mining road re-opened	10	9
DD2011-25	established 2008	Detailed in 2008 Plan of Operation	10	9

Fairburn Drill Plan

Fairburn
Mining &
Exploration

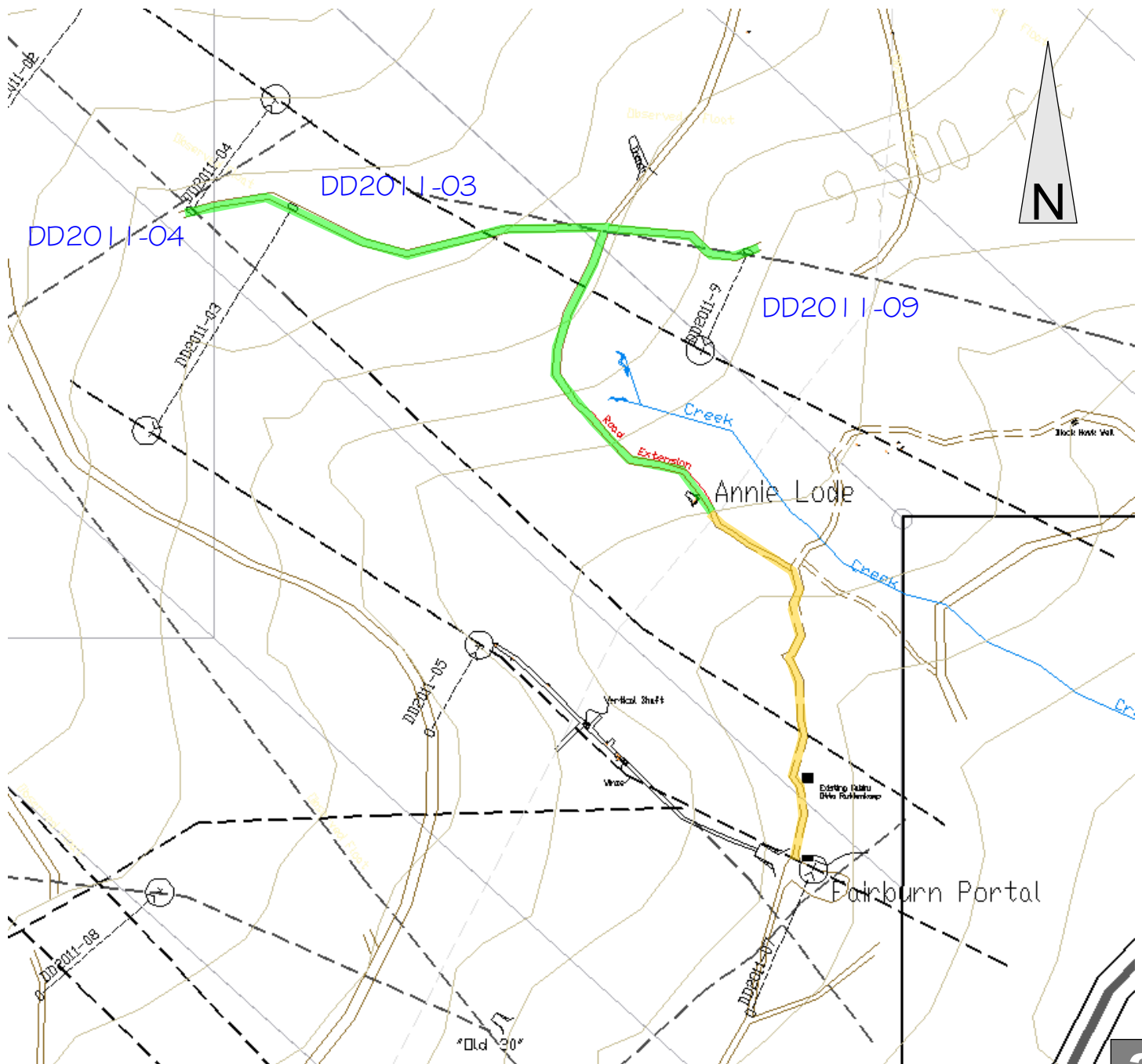


submitted by: Allen Bonck & Walt Amick

File: AccessPlan

Access Description

Drill hole DD2011-03, DD2011-04 & DD2011-09 is accessed in part, through an old mining road (green), that is a continuation of access granted through approval of 2008 Plan of Operation (yellow). To date, no evaluation has been made to determine the number of trees that would need removal nor the amount of grading deemed necessary to provide proper access along this route.



Fairburn Drill Plan

Fairburn
Mining &
Exploration

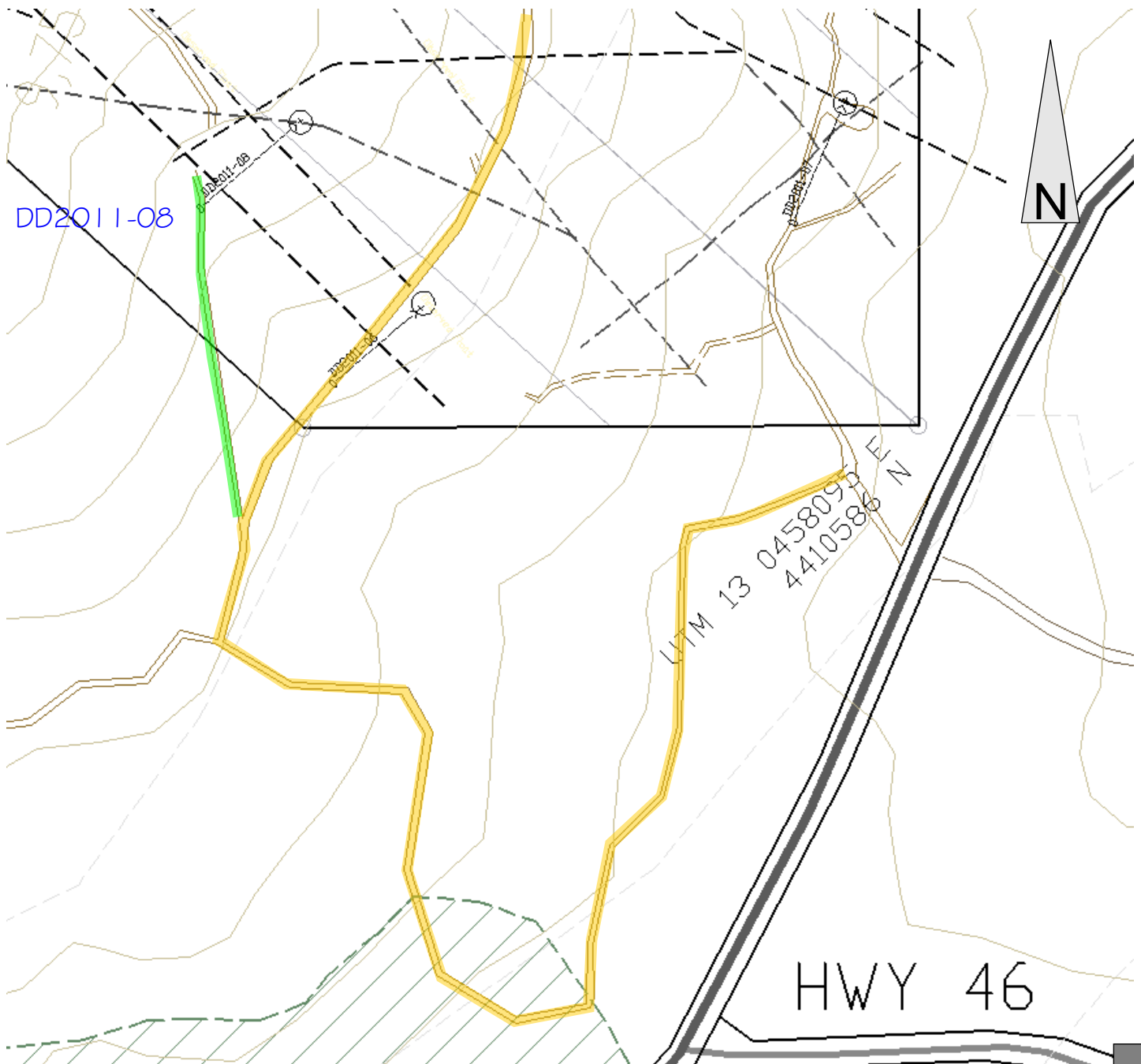


submitted by: Allen Bonck & Walt Amick

File: AccessPlan

Access Description

Drill hole DD2011-08 is accessed through an old mining road (green), that branches off the access to the "Fairburn" trenching site (yellow). To date, no evaluation has been made to determine the number of trees that would need removal nor the amount of grading deemed necessary to provide proper access along this route.



Fairburn Drill Plan

Fairburn
Mining &
Exploration

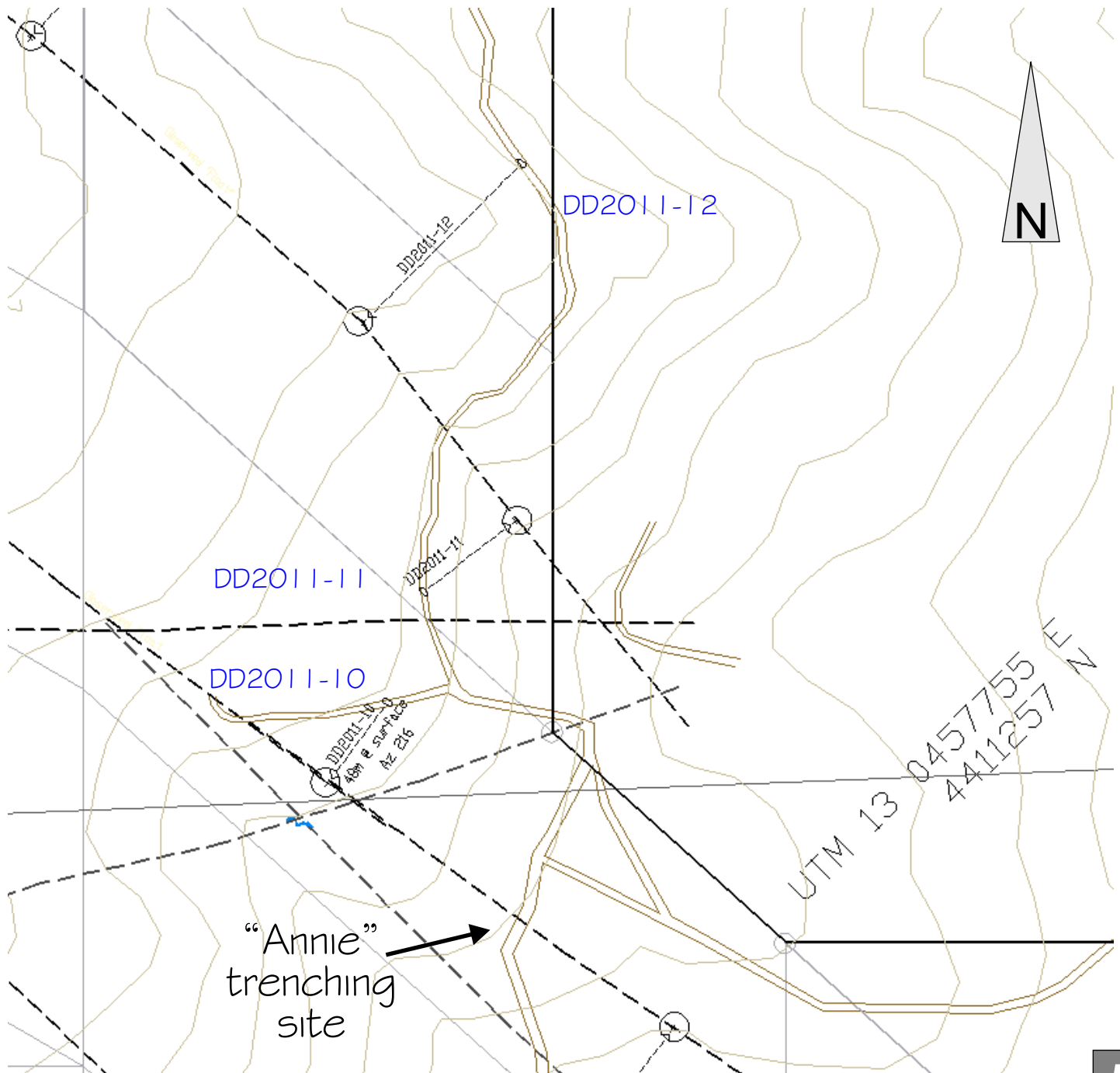


submitted by: Allen Bonck & Walt Amick

File: AccessPlan

Access Description

Drill holes DD2011-10, DD2011-11 & DD2011-12 are a continuation of the old mining road from the "Annie" trenching site. To date, no evaluation has been made to determine the number of trees that would need removal nor the amount of grading deemed necessary to provide proper access along this route.



Fairburn Drill Plan

Fairburn
Mining &
Exploration

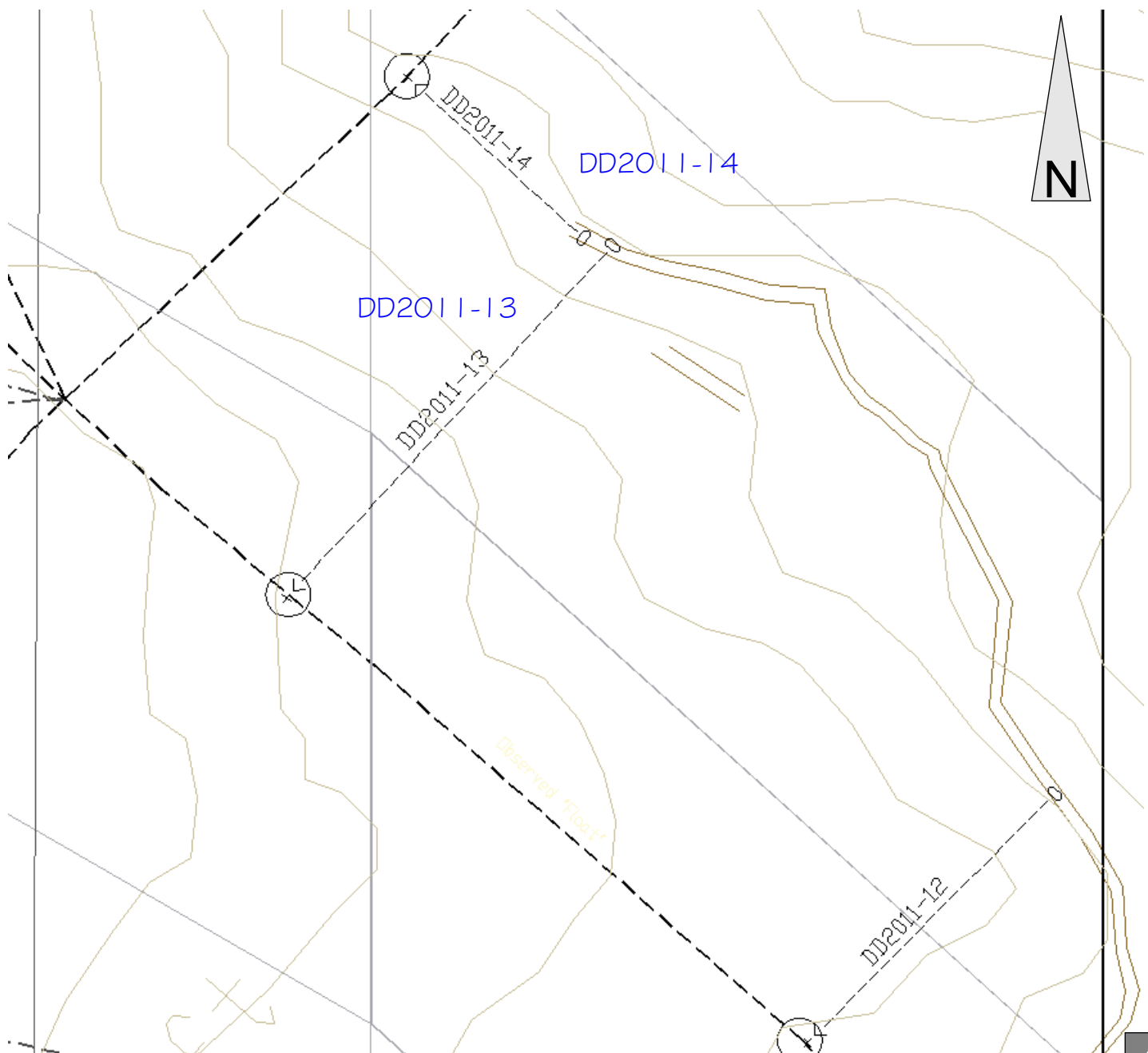


submitted by: Allen Bonck & Walt Amick

File: AccessPlan

Access Description

Drill holes DD2011-13 & DD2011-14 are a continuation of the old mining road shown on the prior map page. To date, no evaluation has been made to determine the number of trees that would need removal nor the amount of grading deemed necessary to provide proper access along this route.



Fairburn Drill Plan

Fairburn
Mining &
Exploration

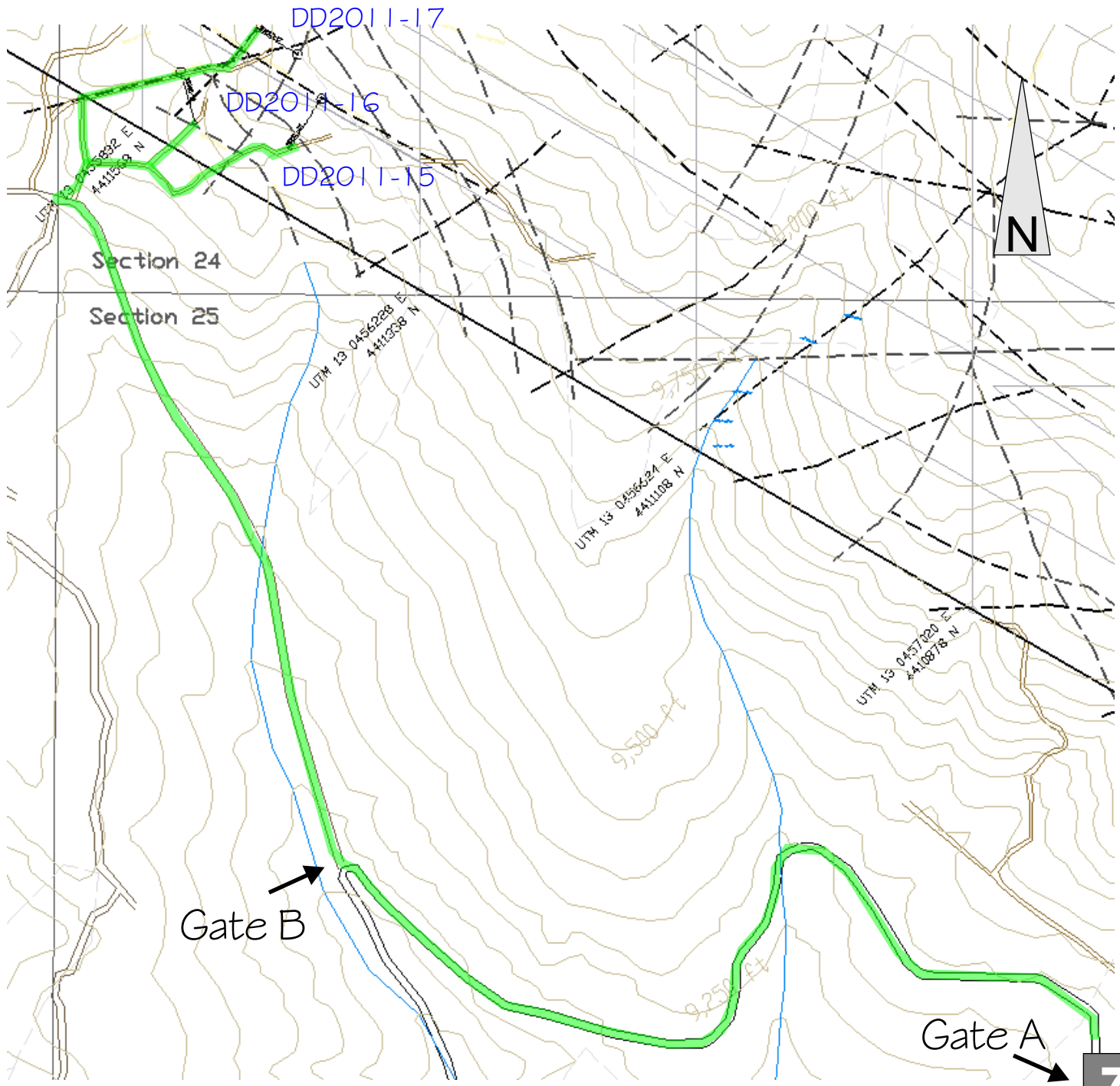


submitted by: Allen Bonck & Walt Amick

File: AccessPlan

Access Description

Drill holes DD2011-15, DD2011-16 & DD2011-17 are firstly accessed through gates "A" and "B" from the Cold Springs Campground. The remainder of the route is via the existing old mining roads. To date, no evaluation has been made to determine the number of trees that would need removal nor the amount of grading deemed necessary to provide proper access along this route.



Fairburn Drill Plan

Fairburn
Mining &
Exploration

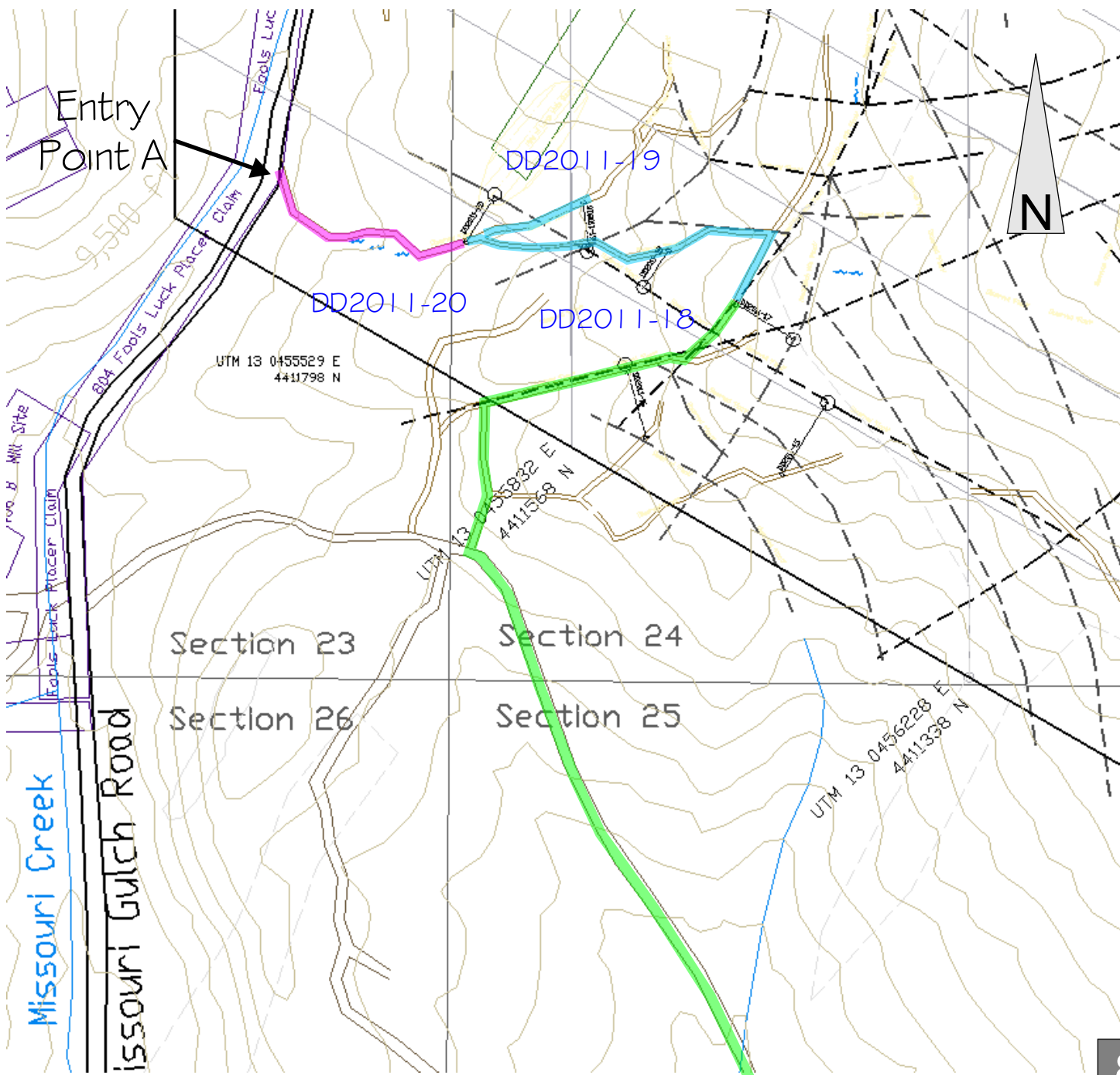


submitted by: Allen Bonck & Walt Amick

File: AccessPlan

Access Description

Drill holes DD2011-18, DD2011-19 & DD2011-20 can either be firstly accessed through old mining road entry point "A" (magenta line), or they can be accessed through further extending (blue line), the access route on map 7 (green line). To date, no evaluation has been made to determine the number of trees that would need removal, nor the amount of grading deemed necessary to provide proper access along either of these routes.



Fairburn Drill Plan

Fairburn
Mining &
Exploration



submitted by: Allen Bonck & Walt Amick

File: AccessPlan

Access Description

Drill hole DD2011-24 is situated just off the shoulder of Missouri Gulch Road. It is a 20 foot by 20 foot pad-site including the recirculation/settling pond. This area off the road has a small clearing, and needs the least amount of site-work to prepare it for drilling than other potential sites deemed close enough to the target structure. There is an old miner's trench opposite the proposed site that could also be chosen. However, it would require more invasive grading to provide access from Missouri Gulch Rd and in generating the drill pad.

Drill hole DD2011-25 is situated on the access road to the adit opened in 2008.

